

Deaf Awareness Week

'Communication for All'

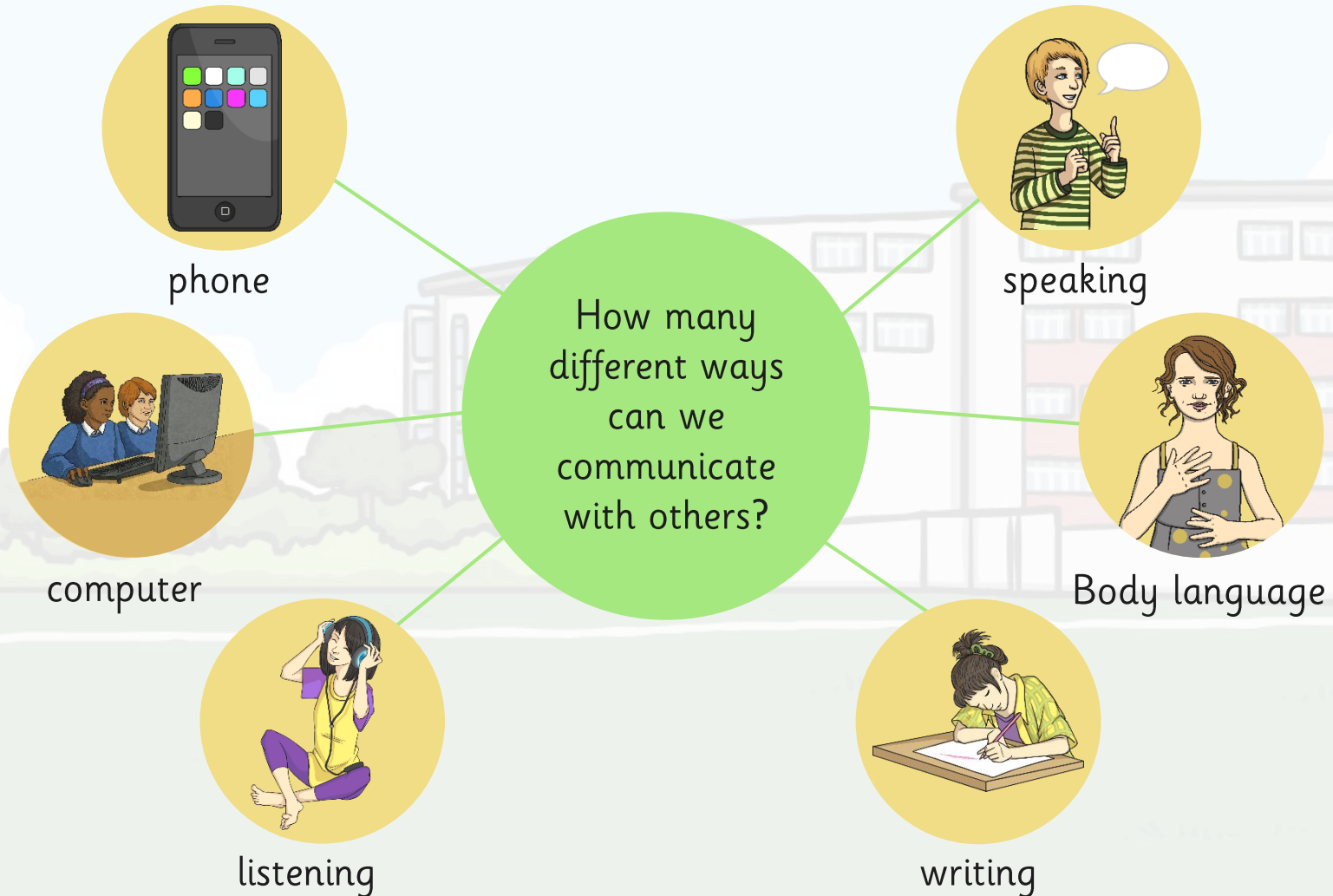


Aims

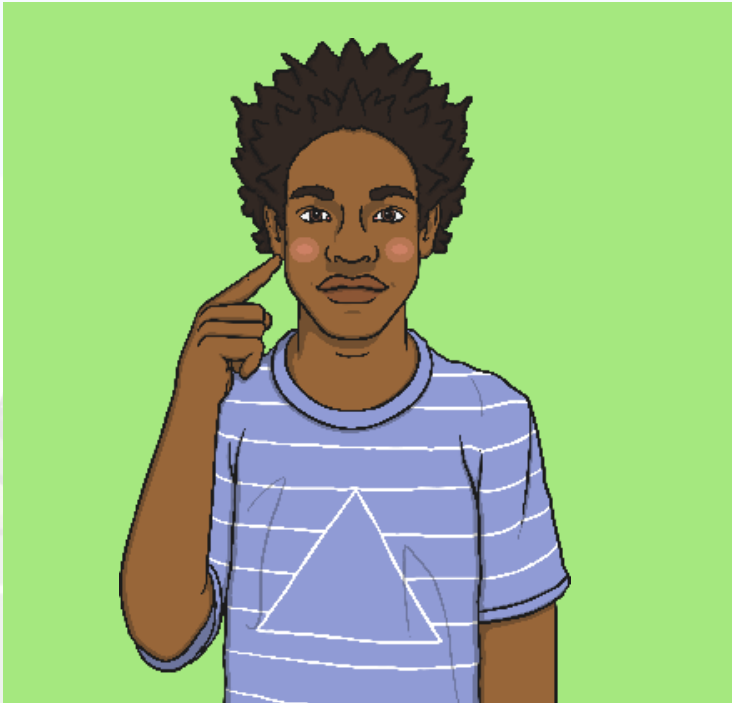
- To think about different types of communication.
- To think how we can be 'Deaf Aware and remove barriers to communication.



How Can We Communicate?



How Can We Communicate with Others?



We can communicate in many different ways.

We use our senses to help us communicate with others. Some people may have difficulty communicating if one or more of their senses are impaired or lost such as sight and hearing.

What Does It Mean to Be Deaf?



Deafness and hearing loss can mean different things to different people. People use various words and terms to describe how they view their own deafness or hearing loss.

The general term 'deaf people' can be used to describe people with any degree of hearing loss.

Being deaf can mean:

- Experiencing difficulty with being able to hear.
- Not being able to hear certain sounds – high pitch, low pitch, sounds nearby or far away.

What Does It Mean to Be Deaf?

There can be different degrees or levels of deafness:

Mildly deaf - People may find it difficult to follow speech in noisy situations.

Moderately deaf - People may need to use hearing aids.

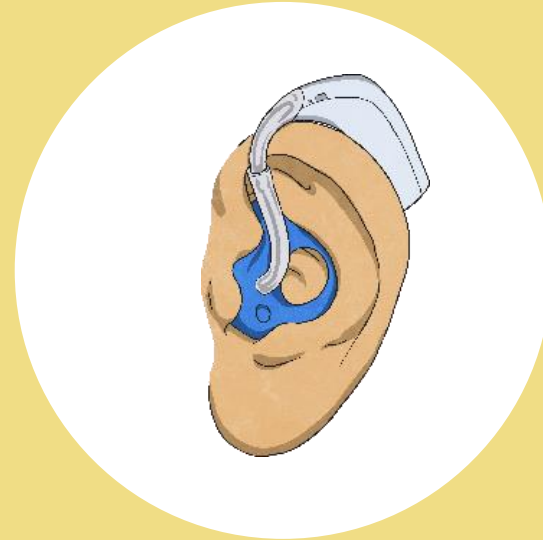
Severely deaf - People will usually need hearing aids and may rely on lip reading or sign language to communicate. Sign language may be the person's preferred method of communication.

Profoundly deaf - Sign language may be the person's preferred method of communication.

Facts and Figures



1 in 6 people in the UK are affected by hearing loss.



Around 2 million people in the UK have hearing aids - about 800,000 are severely or profoundly deaf.

What Causes Deafness?



Some people are deaf from birth.



Some people may lose their hearing due to an illness.



Some people lose their hearing as they get older.

What Causes Deafness?



The ear has two functions:

hearing

balance

Deafness occurs when one part of this system is not working correctly.

How Do Deaf People Communicate?

People who are deaf can communicate in many different ways such as using:



Hearing aids, hearing bands, induction loops, cochlear implant



Sign language, fingerspelling



Lip reading



Facial expressions and gestures



Written language, e.g. Email, text, letter.

Sign Language

Deaf or hearing impaired people may use sign language to communicate

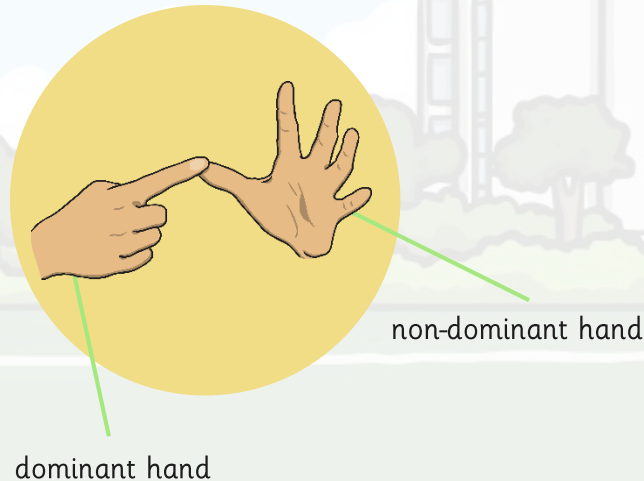


Sign language is used by some deaf people as a way of communicating with others. It is a visual language which uses gestures, facial expression and body language. Hearing people also use sign language to communicate with their deaf friends or family members.

Fingerspelling

Deaf or hearing impaired people may use fingerspelling to communicate.

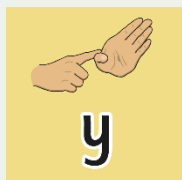
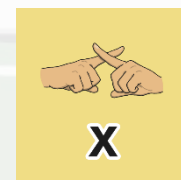
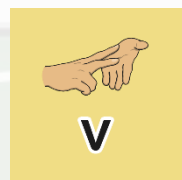
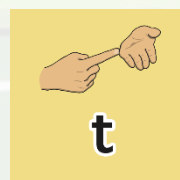
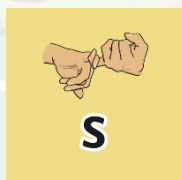
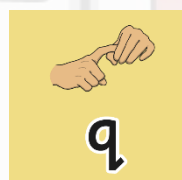
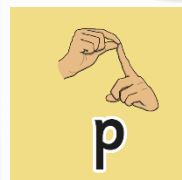
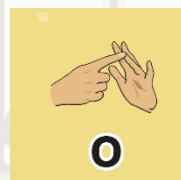
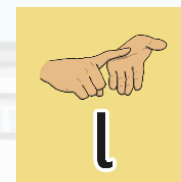
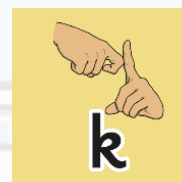
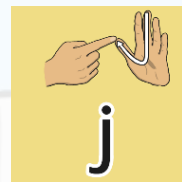
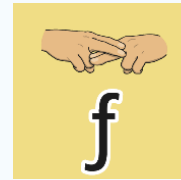
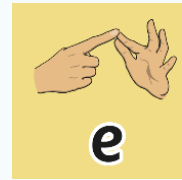
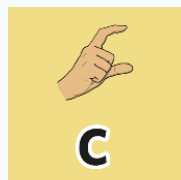
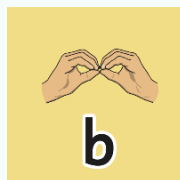
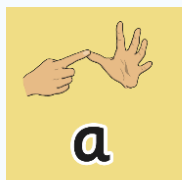
Right-handed sign for the letter 'a'



Fingerspelling is a method of spelling out words using handshapes to represent each letter of the alphabet.

In sign language, fingerspelling is usually used to spell proper nouns and places or if the person doesn't know the sign for a word.

British Sign Language Manual Alphabet



Can you fingerspell your name?

British Sign Language (BSL)

British Sign Language (BSL) is the preferred language of over 70 000 people in the UK. BSL has its own grammar and word order that is different to the English language.

There are other sign systems, such as Sign Supported English (SSE) which use signs from BSL but are in the English word order.

Sign language is not a universal language and varies between countries. There are even differences in sign language between cities and regions, like accents in spoken language! Colours and numbers are a good example of where there are several signs that could be used for the same word!



Numbers in BSL

Handshapes that represent numbers in British Sign Language can vary across the UK. Here are handshapes used in the North of England to sign numbers 1-10.



1



2



3



4



5



6



7



8



9



10

Signer's view.

Can you sign the numbers 1-10?

How Can Having a Barrier to Communication Make You Feel?

Adults and children who are deaf can face communication barriers which can make people...



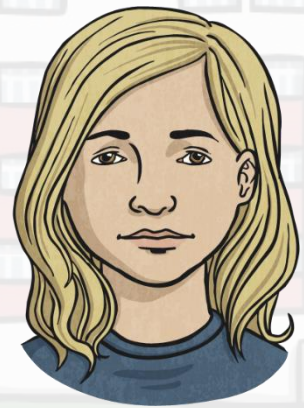
feel isolated

feel excluded from society

feel low or experience depression

have a lack of confidence

find it difficult to secure a job



How could we break down these barriers?

How could we improve our communication with people who are deaf?

How Can We Be Deaf Aware?

Top Tips for Communication



- Make sure you have the person's attention before you start speaking.
- Stand or sit in a place with good lighting, so that you can be lip-read.
- Try to find a quiet place to communicate with little background noise as this can be distracting.
- Use your usual voice level. If a deaf person uses an hearing aid it can be very uncomfortable for them and can seem as though you are shouting.

